



FARMHOUSE

---

AT WILLOW CREEK



# FARMHOUSE

---

## AT WILLOW CREEK

“*WHERE WE CHOOSE to live  
tells the world WHO WE ARE*”

---

Home should be a celebration of time well spent. Life is better at Farmhouse, where classic new homes will have you planning and dreaming for great things ahead. Open living spaces offer room to kick back or entertain in style. Each home will feature the latest in-home energy efficiency, lighting, networking, and climate controls, making your new home timeless and durable. The attention to detail reflects your modern sensibility and sophistication.



Farmhouse at Willow Creek, BlackPine Communities' newest neighborhood, has direct access from your doorstep to parks, walking and bike trails, and a private recreation center to make the most of every day. Walkable convenience to light rail, grocery markets, and nearby retail centers bring tranquility and balance to your on-the-go daily routine.







# 1

---

## RESIDENCE

1,858 Square Feet

3 Bedrooms

2.5 Bathrooms

Upper Level Game Room Loft

Covered Front Porch

2 Car Garage with Direct Access + Opener

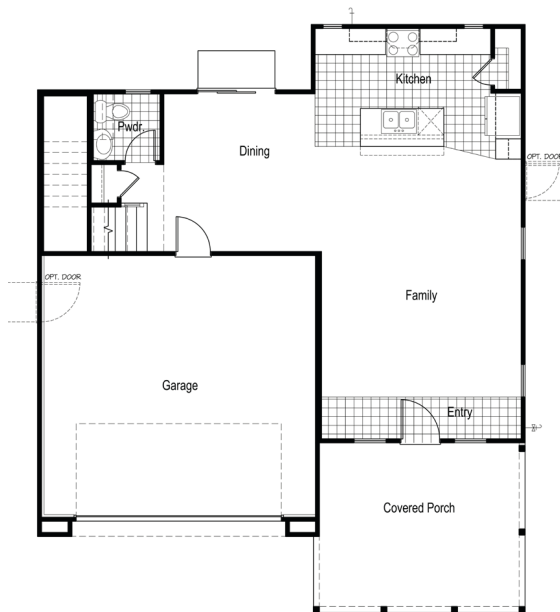
Optional Entry & Rear Patio French Doors



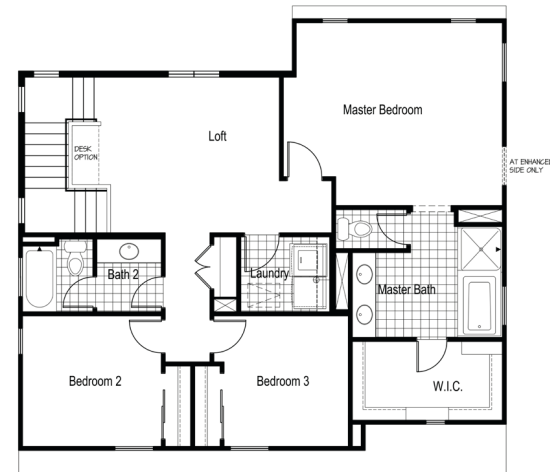
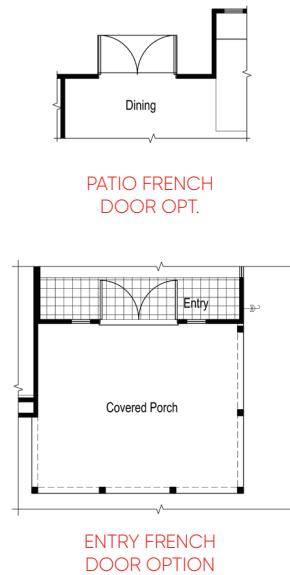
ELEVATION A  
W/ ENHANCED GARAGE DOOR OPT.



ELEVATION B  
W/ ENHANCED GARAGE DOOR OPT.



FIRST FLOOR



SECOND FLOOR



Plans and prices effective date of publication, and subject to change without notice. Square Footages are approximate. Yard sizes may vary. Photographs, renderings, and images are for illustrative purposes only and are not intended to be an actual representation of a specific community, neighborhood, or product offering. BlackPine Builders Inc (BRE #01907099), BlackPine Communities, and the community names are trademarks used for marketing of new homes. Please see your Community Sales Manager for details.





# 2

---

## RESIDENCE

2,157 Square Feet

3 to 4 Bedrooms

2.5 to 3 Bathrooms

2 Car Garage with Direct Access + Opener

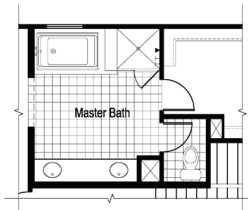
Optional First Floor Bedroom + Bathroom



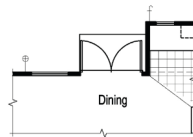
ELEVATION A  
W/ ENHANCED GARAGE DOOR OPT.



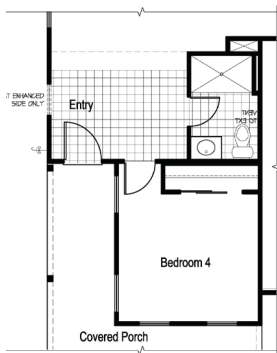
ELEVATION B  
W/ ENHANCED GARAGE DOOR OPT.



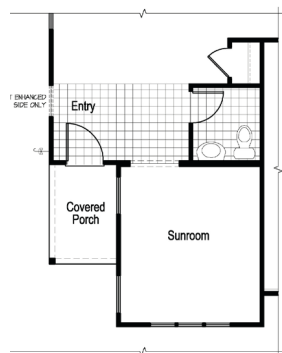
ENHANCED MSTR.  
BATHROOM. OPT.



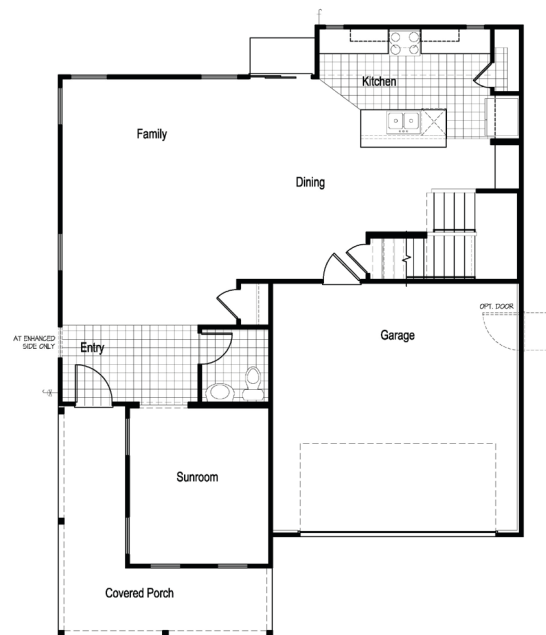
PATIO FRENCH  
DOOR OPT.



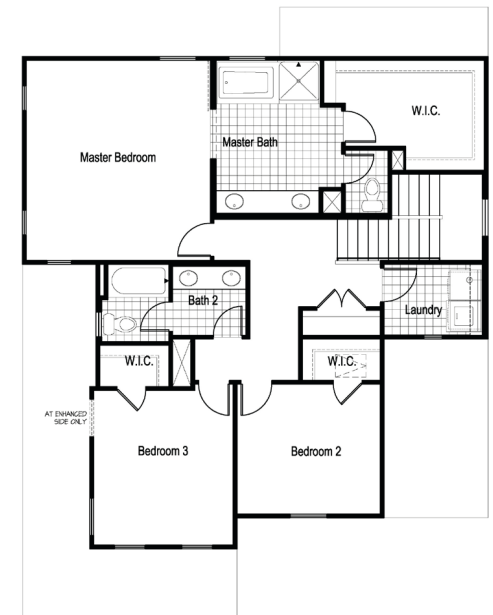
BEDROOM 4  
OPTION



BEDROOM 5  
OPTION



FIRST FLOOR



SECOND FLOOR

Plans and prices effective date of publication, and subject to change without notice. Square Footages are approximate. Yard sizes may vary. Photographs, renderings, and images are for illustrative purposes only and are not intended to be an actual representation of a specific community, neighborhood, or product offering. BlackPine Builders Inc (BRE #01907099), BlackPine Communities, and the community names are trademarks used for marketing of new homes. Please see your Community Sales Manager for details.



# 3

---

## RESIDENCE

2,335 Square Feet

3 to 4 Bedrooms

2.5 to 3 Bathrooms

Upper Level Game Room Loft

2 Car Garage with Direct Access + Opener

Optional First Floor Bedroom + Bathroom

Optional Office & Master Bathroom Barn Door

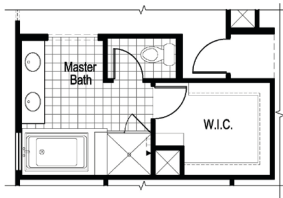




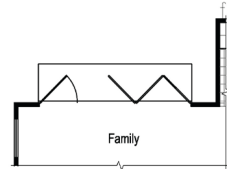
ELEVATION A  
W/ ENHANCED GARAGE DOOR OPT.



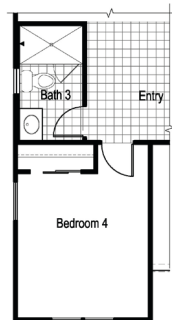
ELEVATION B  
W/ ENHANCED GARAGE DOOR OPT.



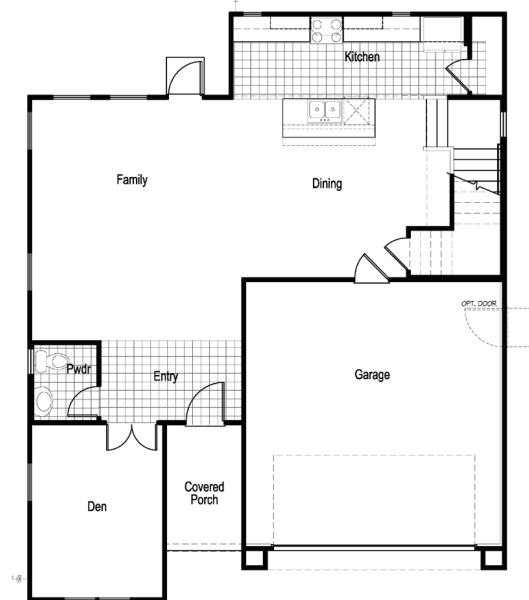
ENHANCED MSTR.  
BATHROOM. OPT.



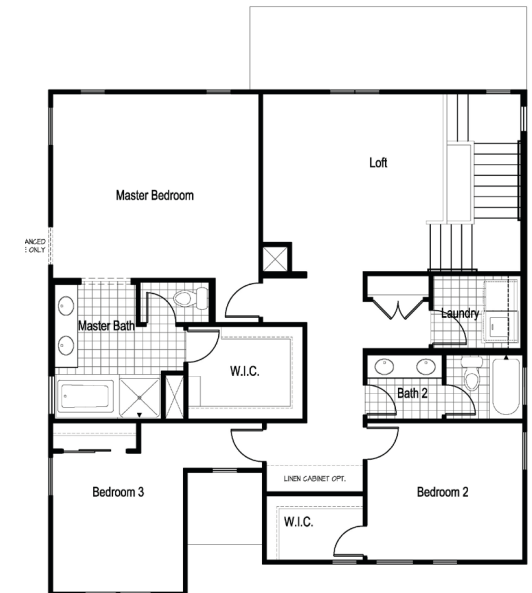
PATIO FOLDING  
WALL DOOR OPT.



BEDROOM 4  
OPTION



FIRST FLOOR



SECOND FLOOR

Plans and prices effective date of publication, and subject to change without notice. Square Footages are approximate. Yard sizes may vary. Photographs, renderings, and images are for illustrative purposes only and are not intended to be an actual representation of a specific community, neighborhood, or product offering. BlackPine Builders Inc (BRE #01907099), BlackPine Communities, and the community names are trademarks used for marketing of new homes. Please see your Community Sales Manager for details.



# 4

---

## RESIDENCE

2,409 Square Feet

3 to 5 Bedrooms

2.5 to 3 Bathrooms

Upper Level Game Room Loft or Optional Bedroom

2 Car Garage with Direct Access + Opener

Optional First Floor Bedroom + Bathroom

Optional Side Patio Folding Wall Doors

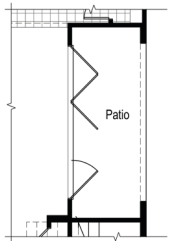




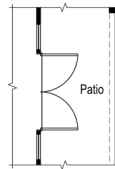
ELEVATION A  
W/ ENHANCED GARAGE DOOR OPT.



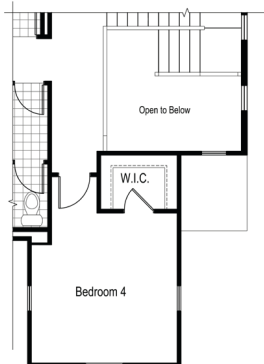
ELEVATION B  
W/ ENHANCED GARAGE DOOR OPT.



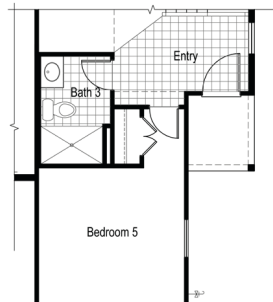
PATIO FOLDING  
WALL DOOR OPT.



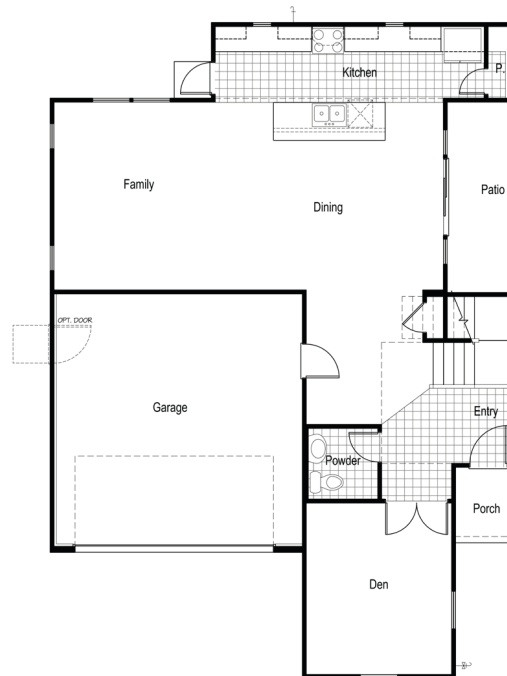
PATIO FRENCH  
DOOR OPT.



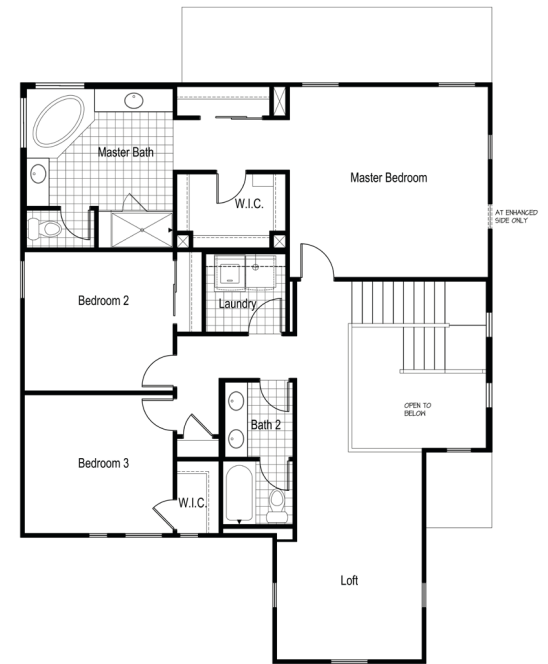
BEDROOM 4  
OPTION



BEDROOM 5  
OPTION



FIRST FLOOR



SECOND FLOOR

Plans and prices effective date of publication, and subject to change without notice. Square Footages are approximate. Yard sizes may vary. Photographs, renderings, and images are for illustrative purposes only and are not intended to be an actual representation of a specific community, neighborhood, or product offering. BlackPine Builders Inc (BRE #01907099), BlackPine Communities, and the community names are trademarks used for marketing of new homes. Please see your Community Sales Manager for details.



# FARMHOUSE

---

## AT WILLOW CREEK



Plans and prices effective date of publication, and subject to change without notice. Square Footages are approximate. Yard sizes may vary. Photographs, renderings, and images are for illustrative purposes only and are not intended to be an actual representation of a specific community, neighborhood, or product offering. BlackPine Builders Inc (BRE #01907099), BlackPine Communities, and the community names are trademarks used for marketing of new homes. Please see your Community Sales Manager for details.

# *INCLUDED IN YOUR NEW HOME*

## *Exceptional Exteriors*

- Timeless "Farmhouse" architectural expressions
- Distinct Roof-lines accented with color coordinated Asphalt Shingles and Metal Standing Seam, per plan and expression
- Energy-efficient Painted Fiberglass Insulated front entry door
- White vinyl windows with stylish enhancements
- Authentic Trim Details, Shutters, Window Casings, Corbels and Trellis' designed for each unique plan and expression
- Weather-Resistant "LP SmartSide"® trim and siding made from premium engineered wood for lasting beauty and curb appeal

## *Gourmet Kitchens*

- Natural Beech cabinetry with natural-colored Melamine interiors, Euro concealed hinges and dovetailed drawer boxes
- Large Islands with sink and extended countertop for bar seating, great for entertaining!
- Granite countertops with choice of three standard selections
- GE Stainless Steel Appliances: 30" gas range, stainless steel hood, and multi-cycle dishwasher
- Pre-plumbed for ice maker to refrigerator
- Stainless Steel under-mount sink with Delta Single-Handle Pull-out Faucet
- Kitchen Sink Garbage disposal

## *Majestic Master Suites*

- Spacious bedroom area with "king-sized" accommodations
- Expansive Walk-In Master Suite closet(s) offering abundant space for your wardrobe and accessories
- Structured Wiring Box located in Master Suite closet with Category 5E voice and data pre-wire, RG6 Cable, TV pre-wire
- Private vanity, separate soaking tub and shower

## *Warm & Cozy Interiors*

- Hand-Set 17"x17" tile in entry, kitchen and Master bathroom; 13x13 tile in powder bath and 2nd bathroom
- Plush, Wall-to-wall carpeting in numerous designer colors
- Classic 5 1/4" Baseboard throughout
- Raised panel interior doors with satin nickle "Schlage" hardware
- Category 5E voice and data prewire in Kitchen, Family, Living/Great Room, Den and all Bedrooms
- RG6 Cable TV prewire Living/Great Room, Den and all Bedrooms
- Walk-In Laundry plumbed for both Gas and Electric dryers
- Integrated Fire sprinkler system throughout the home and garage

## *Elegant Baths*

- Dual sink vanity at Master Bath
- Estone™ Vanity Counter at Master and Guest Bath
- Natural Beech cabinetry to match kitchen
- Soaking Tub and separate Shower at Master Bath with Enhanced Master Bath option, per plan
- 1/4" glass enclosure with Chrome D-handle at Master Bath Shower
- Sterling Performa™ Tub/Shower combo at full Guest Bath
- Pedestal Sink at Powder Room
- Delta Chrome bath faucets and matching bath accessories
- Elongated Toilets at all bathrooms

## *Energy Efficiency & Quality*

- Smart Vent whole house fan system ventilates your home with filtered exterior air through the HVAC ducting
- LED lighting throughout interior and exterior
- "Milgard" Low E Dual-glazed vinyl windows
- Central heating and air conditioning with ZTE-zoned thermal equalizing system
- High Efficiency 92% AFUE Carrier gas furnace
- High efficiency 16 SEER/13 EER Carrier AC unit
- R-38 attic insulation plus R-13 batt insulation at the roof deck
- R-15 wall assembly insulation, R-6 duct insulation
- Super-High Efficiency 95% Rheem Condensing Tank less water heater
- Tub and shower pressure balance temperature valve
- Steel roll-up garage doors with 1/3 hp opener and remote



## *Personalize Your Home*

With the guidance of the BlackPine design consultants you may choose from a host of optional upgrades to personalize your new home, including flooring, countertops, cabinetry, appliances, electrical and audio visual, staircase and finish carpentry to make your home uniquely yours.









*The Brownstones at Curtis Park Village, Sacramento*



*Molly's Walk at Diamond Creek, Roseville*

“*PASSIONATE ABOUT crafting  
your favorite PLACES*”

## THIS IS BLACKPINE

Every one of us has our own reasons for why we live where we do. We have many reasons, each very specific. Because the place where we live really demonstrates what we think is important in life. We ourselves choose to live and to build in the Sacramento area. Here, we create and restore real neighborhoods. From the time we choose a community, to the day we finish building, we think about how your home's design and living spaces, its vicinity and its amenities, will best serve your lifestyle, not impose one upon you. That's the difference between just building a house and building you a home that's truly yours.

**FOLSOM** | **DOWNTOWN SACRAMENTO** | **ROSEVILLE**

**EAST SACRAMENTO** | **MIDTOWN SACRAMENTO**

**CURTIS PARK** | **WEST SACRAMENTO**

**BLACKPINE**  
COMMUNITIES.COM



# BLACKPINE

COMMUNITIES

984 Farmhouse Way  
Folsom, California 95630  
916.790.8052

